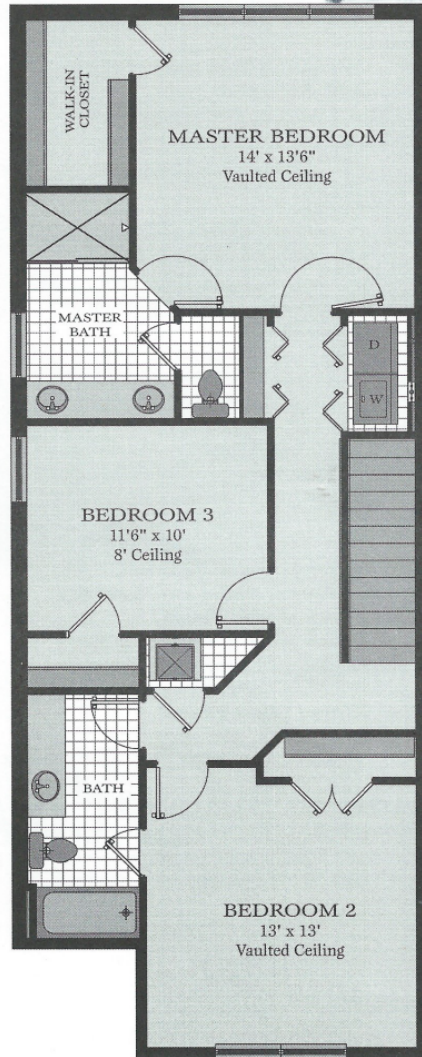
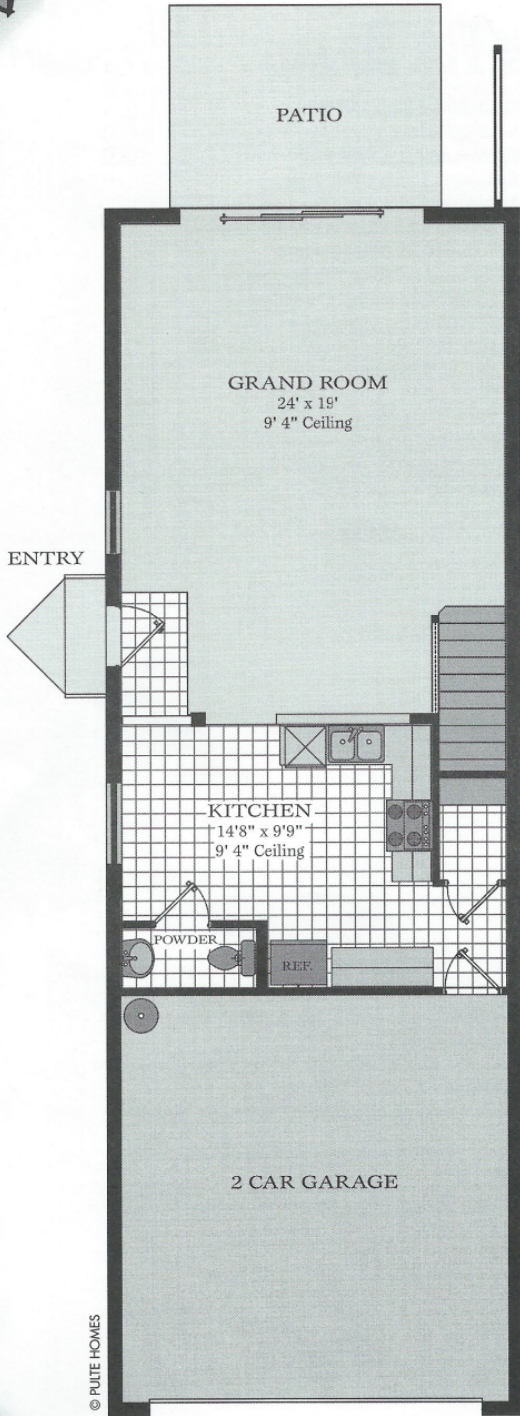


THE MONTENERO

3 Bedrooms, 2½ Bathrooms and 2 Car Garage

Living Area	1,715 sq. ft.
Patio	133 sq. ft.
Entry	12 sq. ft.
Garage	380 sq. ft.
Total	2,240 sq. ft.



© PULTE HOMES



Artist's renderings are conceptual only. Exact dimensions and spatial arrangements on this plan are approximate and may vary in final construction.